

## G-17 f

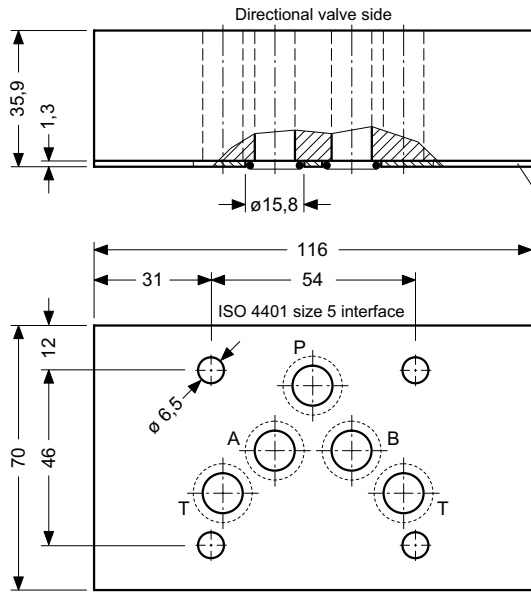
### Modular-Mounting Auxiliary Plates, ISO size 5

Series SZ... / SA... / SWAA...

350 bar

- Material: steel
- Surface treatment: phosphated

#### DIMENSIONS

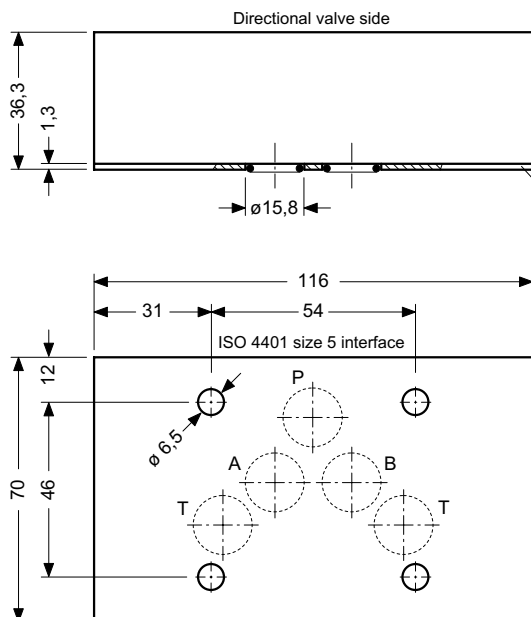
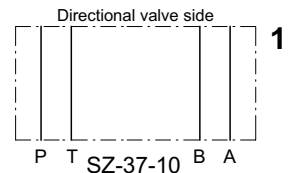


Supplied complete with seal plate and 5 O-rings no. 014  $\varnothing$  12,42 x 1,78

These plates are included as required to provide a simple spacer function

Mass: 2,00 kg

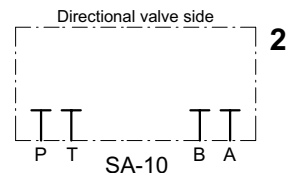
#### SYMBOLS



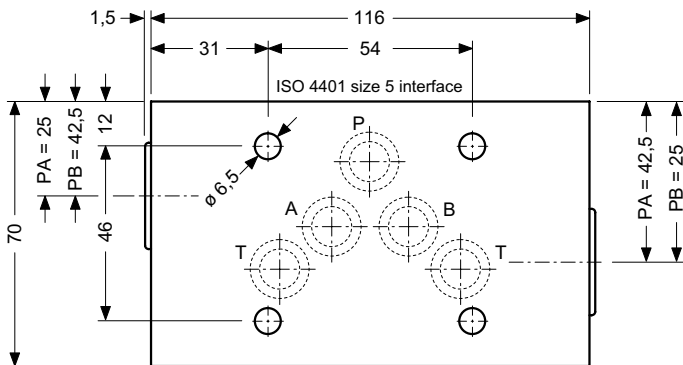
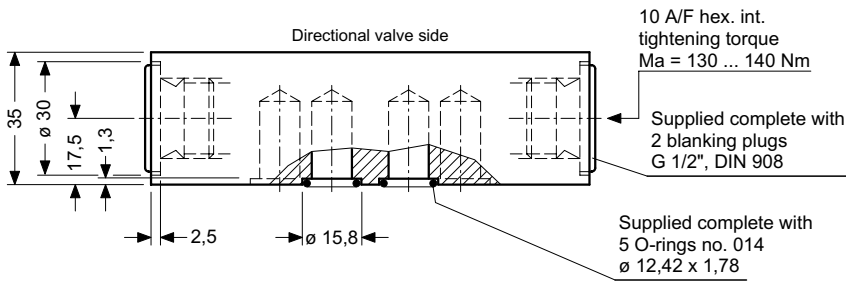
Supplied complete with seal plate and 5 O-rings no. 014  $\varnothing$  12,42 x 1,78

These blanking- or capping plates are used, for example, to blank-off spare subplate stations and can be used as the starting point for making special connection plates.

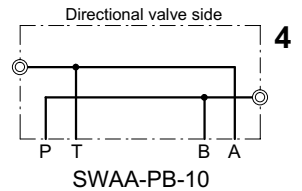
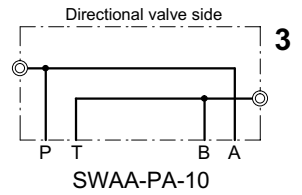
Mass 2,20 kg



## DIMENSIONS



## SYMBOLS



Cross-over plates can be used in place of directional valves to provide permanent flow path connections. Additional G 1/2" side ports are provided for both A and B.

Mass: 1,90 kg